



Compressor
Voltage Code : KZ

TAG5561E

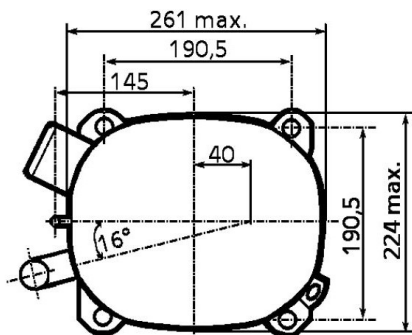
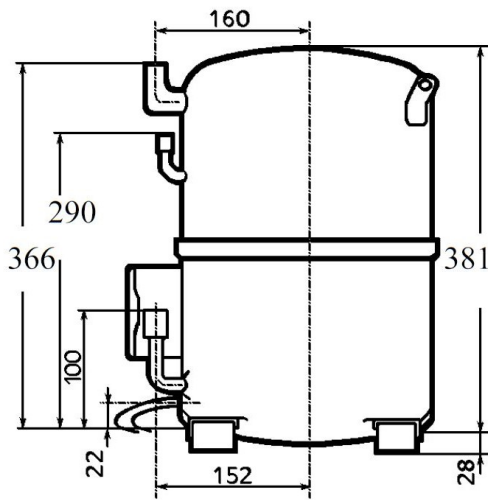
Air Conditioning & Heating (CA)

220V 3~ 50Hz / 220V 3~ 60 Hz

R22

AGB5561EKZ

Conditions	Frequency	Nominal Cooling Capacity		Sound Power ISO3745 / ISO 3743-1
		Watts	BTU/h	
CECOMAF / R22	50 Hz / 60 Hz	12870 / 15164	43888 / 51711	77 dBA



Displacement (cc)	112,5
Net Weight (Kg)	44.5
Oil Quantity (cc)	1760.0
Oil Type	Mineral
Expansion Device	Capillary_Tube/Expansion_Valve
Cooling	Fan
Main Winding (Ohm)	0.68
Current	
RLA (A)	18 17
MCC (A)	30 32
LRA (A)	128 125
Electrical Equipment	TRI
Overload	Interne
Refrigerating connection for	
Suction Tube	22.2 (7/8")
Discharge Tube	12.7 (1/2")
Process Tube	6.35 (1/4")

* CECOMAF : T°Cond. 55.0°C / T°Evap. 5.0°C / T°Return gas temp.. 32.0°C
T°Subcooling. 0.0K

Certificates :



Note : Tecumseh reserves the right to change information contained in this document without notification.



Tecumseh

TAG5561E	Tension KZ : 220V 3~ 50Hz / 220V 3~ 60 Hz
-----------------	--

Les performances sont données dans les conditions CECOMAF :	Gaz aspirés :	32.0 °C
Condition Dew	Sous refroidissement :	0.0 K
The performance data are in CECOMAF conditions :	Return gas :	32.0 °C
Dew Condition	Subcooling :	0.0 K

© 2025 Tecumseh Products Company
All rights reserved

50 Hz R22

N°337GL-K

4 T condensation	5 T évaporation	(°C)	-25	-20	-15	-10	-5	0	5	10	15
40	1 P frigorifique	(Watt)					10664	13448	16659	20283	24306
	2 P absorbée	(W)					3607	3930	4256	4584	4914
	3 I absorbée	(A)					16.2	16.6	17.2	17.8	18.6
50	1 P frigorifique	(Watt)						11271	14103	17305	20860
	2 P absorbée	(W)						4246	4680	5113	5545
	3 I absorbée	(A)						17.6	18.6	19.6	20.6
60	1 P frigorifique	(Watt)							11645	14436	17535
	2 P absorbée	(W)							5106	5644	6177
	3 I absorbée	(A)							19.9	21.3	22.7

60 Hz R22

N°337GL-K

4 T condensation	5 T évaporation	(°C)	-25	-20	-15	-10	-5	0	5	10	15
40	1 P frigorifique	(Watt)					12641	15895	19629	23829	28479
	2 P absorbée	(W)					4471	4961	5425	5862	6273
	3 I absorbée	(A)					14.3	15.7	17.0	18.2	19.3
50	1 P frigorifique	(Watt)						13321	16617	20330	24442
	2 P absorbée	(W)						5360	5965	6541	7087
	3 I absorbée	(A)						16.6	18.3	19.9	21.5
60	1 P frigorifique	(Watt)							13720	16959	20547
	2 P absorbée	(W)							6507	7220	7899
	3 I absorbée	(A)							19.7	21.7	23.7

1 = cooling capacity 2 = power input 3 = current 4 = condensing temperature 5 = evaporating temperature

Nota : Tecumseh se réserve le droit de modifier les informations contenues dans ce document sans préavis.

Note : Tecumseh reserves the right to change information contained in this document without notification.