



Compressor
Voltage Code : FZ

RG5480N-FZ4A

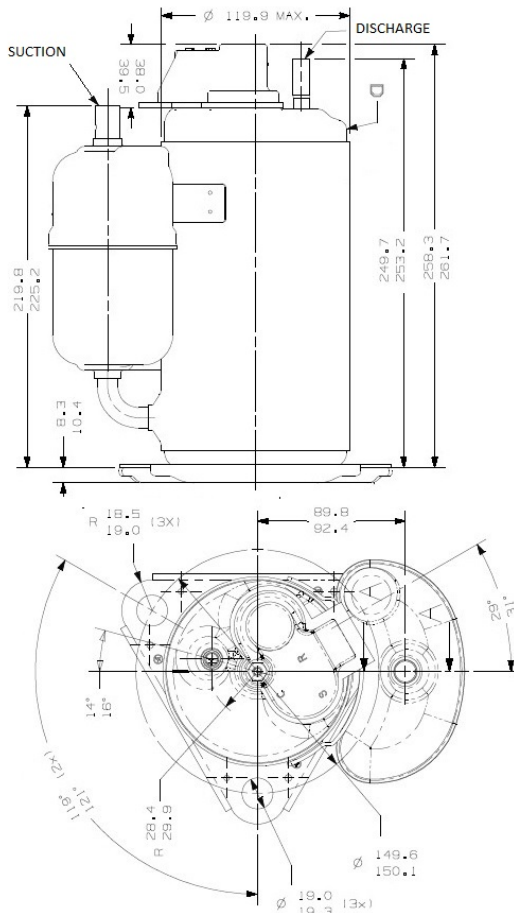
Air Conditioning & Heating (CA)

220 - 240V 1~ 50 Hz

R1234yf / R134a / R513A

RG5480N-FZ4A

Conditions	Frequency	Nominal Cooling Capacity		Sound Power ISO3745 / ISO 3743-1
		Watts	BTU/h	
CECOMAF / R1234yf	50 Hz	1536	5239	
CECOMAF / R134a	50 Hz	1558	5313	
CECOMAF / R513A	50 Hz	1545	5267	



Displacement (cc)	16,1
Net Weight (Kg)	11.9
Oil Quantity (cc)	290.0
Oil Type	Polyvinylether
Expansion Device	Capillary_Tube
Cooling	Fan
Main Winding (Ohm)	5.2
Start Winding (Ohm)	4.85
Current	
RLA (A)	2.5
MCC (A)	4,2
LRA (A)	15
Electrical Equipment	CSR
Overload	MRA58181
Time Check	6.5s - 15s / 11.5 A
Open Temp	130° C
Close Temp	52° C
Start Capacitor	72-88 µF / 330 V
Run Capacitor	25 µF / 400 V
Potential Relay	RVA3D**
Pick Up	150/163V
Drop Out	40/90V
Refrigerating connection for	
Suction Tube	9.5 (3/8")
Discharge Tube	7.9 (5/16")

* CECOMAF : T°Cond. 55.0°C / T°Evap. 5.0°C / T°Return gas temp.. 32.0°C
T°Subcooling. 0.0K

Certificates :



Note : Tecumseh reserves the right to change information contained in this document without notification.



Tecumseh

RG5480N-FZ4A	Tension FZ : 220 - 240V 1~ 50 Hz
---------------------	---

Les performances sont données dans les conditions CECOMAF :	Gaz aspirés :	32.0 °C
Condition Dew	Sous refroidissement :	0.0 K
The performance data are in CECOMAF conditions :	Return gas :	32.0 °C
Dew Condition	Subcooling :	0.0 K

© 2025 Tecumseh Products Company
All rights reserved

50 Hz R1234yf

N°3525

4 T condensation	5 T évaporation	(°C)	-25	-20	-15	-10	-5	0	5	10	15
40	1 P frigorifique	(Watt)				1204	1429	1687	1978	2302	2660
	2 P absorbée	(W)				418	436	450	458	458	448
	3 I absorbée	(A)				1.93	2.01	2.07	2.11	2.11	2.06
50	1 P frigorifique	(Watt)					1243	1446	1670	1916	2184
	2 P absorbée	(W)					493	516	535	548	553
	3 I absorbée	(A)					2.27	2.37	2.46	2.52	2.54
60	1 P frigorifique	(Watt)						1234	1410	1595	1792
	2 P absorbée	(W)						595	624	650	670
	3 I absorbée	(A)						2.74	2.87	2.99	3.08

50 Hz R134a

N°RG5480N-FZ4A

4 T condensation	5 T évaporation	(°C)	-25	-20	-15	-10	-5	0	5	10	15
40	1 P frigorifique	(Watt)					1347	1629	1951	2314	2720
	2 P absorbée	(W)					435	450	459	459	450
	3 I absorbée	(A)					2.00	2.07	2.11	2.11	2.07
50	1 P frigorifique	(Watt)						1421	1680	1969	2287
	2 P absorbée	(W)						520	540	554	560
	3 I absorbée	(A)						2.39	2.48	2.55	2.57
60	1 P frigorifique	(Watt)							1441	1670	1916
	2 P absorbée	(W)							634	662	684
	3 I absorbée	(A)							2.91	3.04	3.15

1 = cooling capacity 2 = power input 3 = current 4 = condensing temperature 5 = evaporating temperature

Nota : Tecumseh se réserve le droit de modifier les informations contenues dans ce document sans préavis.

Note : Tecumseh reserves the right to change information contained in this document without notification.



Tecumseh

RG5480N-FZ4A	Tension FZ : 220 - 240V 1~ 50 Hz
---------------------	---

Les performances sont données dans les conditions CECOMAF :	Gaz aspirés :	32.0 °C
Condition Dew	Sous refroidissement :	0.0 K
The performance data are in CECOMAF conditions :	Return gas :	32.0 °C
Dew Condition	Subcooling :	0.0 K

50 Hz R513A

N°3531

4 T condensation	5 T évaporation	(°C)	-25	-20	-15	-10	-5	0	5	10	15
40	1 P frigorifique	(Watt)					1431	1711	2029	2383	2775
	2 P absorbée	(W)					455	468	474	475	470
	3 I absorbée	(A)					2.09	2.15	2.18	2.18	2.16
50	1 P frigorifique	(Watt)						1443	1694	1970	2273
	2 P absorbée	(W)						534	552	563	568
	3 I absorbée	(A)						2.45	2.53	2.58	2.61
60	1 P frigorifique	(Watt)							1402	1619	1849
	2 P absorbée	(W)							647	673	692
	3 I absorbée	(A)							2.97	3.09	3.18

© 2025 Tecumseh Products Company
All rights reserved

1 = cooling capacity 2 = power input 3 = current 4 = condensing temperature 5 = evaporating temperature

Nota : Tecumseh se réserve le droit de modifier les informations contenues dans ce document sans préavis.

Note : Tecumseh reserves the right to change information contained in this document without notification.