



Compressor
Voltage Code : XC

FH4525Y-XC

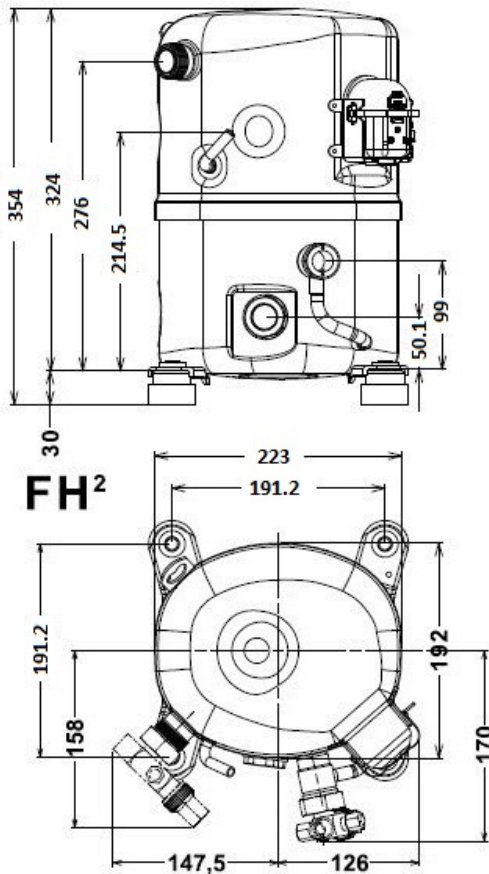
High Temp. Commercial (HP)

220 - 240V 1~ 50 Hz

R134a / R513A

FH4525Y-XC3A

Conditions	Frequency	Nominal Cooling Capacity		Sound Power ISO3745 / ISO 3743-1
		Watts	BTU/h	
CECOMAF / R134a	50 Hz	5141	17530	70 dBA
CECOMAF / R513A	50 Hz	5234	17849	70 dBA



Displacement (cc)	63
Net Weight (Kg)	30.0
Oil Quantity (cc)	1140.0
Oil Type	Polyolester
Expansion Device	Capillary_Tube/Expansion_Valve
Cooling	Fan
Main Winding (Ohm)	1.31
Start Winding (Ohm)	3.8
Current	
RLA (A)	9.5
MCC (A)	14
LRA (A)	52
Electrical Equipment	CSR
Overload	Interne
Start Capacitor	88 µF / 330 V
Run Capacitor	35 µF / 400 V
Potential Relay	RVA4G**
Pick Up	180/195V
Drop Out	40/105V
Refrigerating connection for	
Suction Tube	15.9 (5/8")
Discharge Tube	12.7 (1/2")
Process Tube	6.35 (1/4")

* CECOMAF : T°Cond. 55.0°C / T°Evap. 5.0°C / T°Return gas temp.. 32.0°C
T°Subcooling. 0.0K

Certificates :



Note : Tecumseh reserves the right to change information contained in this document without notification.



Tecumseh

FH4525Y-XC	Tension XC : 220 - 240V 1~ 50 Hz
-------------------	---

Les performances sont données dans les **conditions CECOMAF** :
 Condition Dew
 The performance data are in **CECOMAF conditions** :
 Dew Condition

Gaz aspirés : 32.0 °C
 Sous refroidissement : 0.0 K
 Return gas : 32.0 °C
 Subcooling : 0.0 K

© 2025 Tecumseh Products Company
All rights reserved

50 Hz R134a

N°User-355

4 T condensation	5 T évaporation	(°C)	-25	-20	-15	-10	-5	0	5	10	15
30	1 P frigorifique	(Watt)	1508	2176	2974	3923	5045	6361	7893	9661	11687
	2 P absorbée	(W)	847	967	1081	1189	1292	1389	1483	1571	1656
	3 I absorbée	(A)	4.05	4.70	5.30	5.86	6.39	6.87	7.31	7.71	8.07
40	1 P frigorifique	(Watt)		1677	2392	3234	4225	5386	6739	8307	10110
	2 P absorbée	(W)		986	1135	1280	1420	1557	1692	1823	1951
	3 I absorbée	(A)		4.60	5.38	6.13	6.83	7.50	8.12	8.71	9.25
50	1 P frigorifique	(Watt)			1856	2596	3461	4473	5654	7026	8611
	2 P absorbée	(W)			1155	1341	1525	1707	1888	2067	2245
	3 I absorbée	(A)			5.44	6.36	7.25	8.10	8.91	9.67	10.4
60	1 P frigorifique	(Watt)				2023	2768	3636	4650	5832	7205
	2 P absorbée	(W)				1378	1611	1843	2075	2307	2540
	3 I absorbée	(A)				6.57	7.64	8.67	9.66	10.6	11.5

50 Hz R513A

N°User-356

4 T condensation	5 T évaporation	(°C)	-25	-20	-15	-10	-5	0	5	10	15
30	1 P frigorifique	(Watt)	1748	2477	3319	4292	5410	6691	8151	9807	11674
	2 P absorbée	(W)	941	1060	1170	1273	1376	1482	1596	1723	1867
	3 I absorbée	(A)	4.51	5.15	5.74	6.28	6.80	7.32	7.87	8.45	9.10
40	1 P frigorifique	(Watt)		1870	2628	3501	4506	5659	6977	8476	10174
	2 P absorbée	(W)		1072	1222	1364	1502	1643	1788	1945	2116
	3 I absorbée	(A)		5.00	5.79	6.53	7.23	7.91	8.59	9.29	10.0
50	1 P frigorifique	(Watt)			1998	2757	3633	4643	5804	7134	8647
	2 P absorbée	(W)			1230	1421	1606	1790	1978	2174	2383
	3 I absorbée	(A)			5.79	6.74	7.64	8.49	9.33	10.2	11.0
60	1 P frigorifique	(Watt)				2109	2841	3694	4683	5827	7143
	2 P absorbée	(W)				1447	1688	1927	2166	2412	2668
	3 I absorbée	(A)				6.89	8.01	9.06	10.1	11.1	12.1

1 = cooling capacity 2 = power input 3 = current 4 = condensing temperature 5 = evaporating temperature

Nota : Tecumseh se réserve le droit de modifier les informations contenues dans ce document sans préavis.

Note : Tecumseh reserves the right to change information contained in this document without notification.