



Tecumseh

Compressor
Voltage Code : XG

FH4518Y-XG

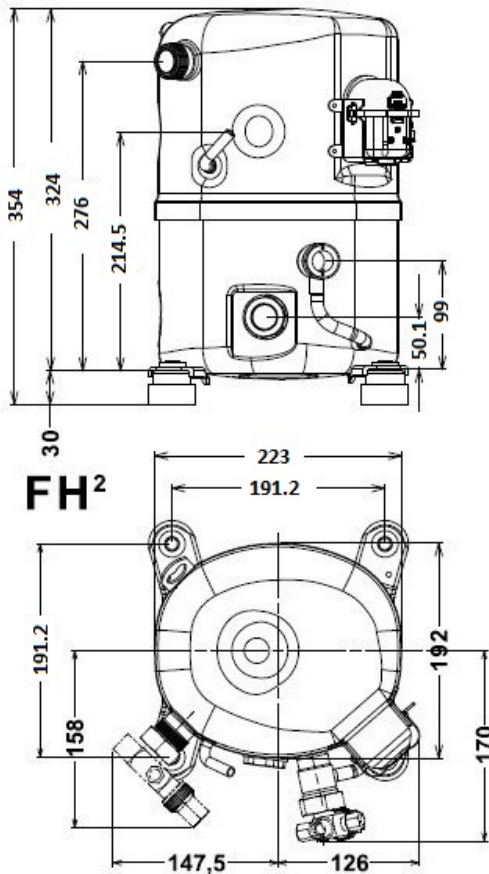
High Temp. Commercial (HP)

380-420V 3~ 50Hz / 460V 3~ 60 Hz

R134a / R513A

FH4518Y-XG1A

Conditions	Frequency	Nominal Cooling Capacity		Sound Power ISO3745 / ISO 3743-1
		Watts	BTU/h	
CECOMAF / R134a	50 Hz / 60 Hz	3680 / 4474	12548 / 15255	69 dBA
CECOMAF / R513A	50 Hz / 60 Hz	3747 / 4555	12776 / 15533	69 dBA



Displacement (cc)	48,5
Net Weight (Kg)	29.0
Oil Quantity (cc)	1140.0
Oil Type	Polyolester
Expansion Device	Capillary_Tube/Expansion_Valve
Cooling	Fan
Main Winding (Ohm)	10.25
Current	
RLA (A)	2.5 2.5
MCC (A)	4.9
LRA (A)	18
Electrical Equipment	TRI
Overload	Interne
Refrigerating connection for	
Suction Tube	15.9 (5/8")
Discharge Tube	12.7 (1/2")
Process Tube	6.35 (1/4")

* CECOMAF : T°Cond. 55.0°C / T°Evap. 5.0°C / T°Return gas temp.. 32.0°C
T°Subcooling. 0.0K

Certificates :



Note : Tecumseh reserves the right to change information contained in this document without notification.



Tecumseh

FH4518Y-XG	Tension XG : 380-420V 3~ 50Hz / 460V 3~ 60 Hz
-------------------	------------------------------------------------------

Les performances sont données dans les conditions CECOMAF :	Gaz aspirés :	32.0 °C
Condition Dew	Sous refroidissement :	0.0 K
The performance data are in CECOMAF conditions :	Return gas :	32.0 °C
Dew Condition	Subcooling :	0.0 K

50 Hz R134a											
											N°User-357
4 T condensation	5 T évaporation	(°C)	-25	-20	-15	-10	-5	0	5	10	15
30	1 P frigorifique	(Watt)	1079	1552	2127	2822	3653	4636	5787	7123	8660
	2 P absorbée	(W)	582	683	773	853	925	990	1049	1102	1153
	3 I absorbée	(A)	1.13	1.27	1.37	1.46	1.53	1.57	1.59	1.59	1.56
40	1 P frigorifique	(Watt)		1213	1715	2314	3024	3864	4849	5996	7321
	2 P absorbée	(W)		681	801	912	1016	1115	1208	1298	1385
	3 I absorbée	(A)		1.28	1.47	1.65	1.80	1.93	2.03	2.12	2.18
50	1 P frigorifique	(Watt)			1359	1880	2489	3203	4040	5016	6149
	2 P absorbée	(W)			814	955	1090	1220	1347	1471	1594
	3 I absorbée	(A)			1.47	1.73	1.97	2.18	2.37	2.54	2.69
60	1 P frigorifique	(Watt)				1504	2030	2639	3346	4170	5128
	2 P absorbée	(W)				1002	1166	1327	1485	1643	1800
	3 I absorbée	(A)				1.71	2.03	2.33	2.61	2.87	3.10

60 Hz R134a											
											N°User-357
4 T condensation	5 T évaporation	(°C)	-25	-20	-15	-10	-5	0	5	10	15
30	1 P frigorifique	(Watt)	1279	1880	2583	3406	4367	5483	6773	8255	9946
	2 P absorbée	(W)	715	825	925	1016	1101	1181	1259	1336	1414
	3 I absorbée	(A)	1.08	1.25	1.41	1.56	1.70	1.83	1.95	2.05	2.15
40	1 P frigorifique	(Watt)		1434	2079	2823	3686	4685	5838	7164	8681
	2 P absorbée	(W)		839	975	1101	1220	1333	1443	1550	1658
	3 I absorbée	(A)		1.23	1.43	1.63	1.82	2.00	2.16	2.32	2.47
50	1 P frigorifique	(Watt)			1594	2260	3024	3904	4919	6088	7430
	2 P absorbée	(W)			985	1155	1315	1469	1618	1763	1908
	3 I absorbée	(A)			1.45	1.70	1.93	2.16	2.37	2.58	2.77
60	1 P frigorifique	(Watt)				1739	2403	3164	4041	5052	6217
	2 P absorbée	(W)				1169	1379	1581	1777	1968	2158
	3 I absorbée	(A)				1.75	2.03	2.31	2.57	2.83	3.07

1 = cooling capacity 2 = power input 3 = current 4 = condensing temperature 5 = evaporating temperature

Nota : Tecumseh se réserve le droit de modifier les informations contenues dans ce document sans préavis.

Note : Tecumseh reserves the right to change information contained in this document without notification.

© 2025 Tecumseh Products Company
All rights reserved



Tecumseh

FH4518Y-XG	Tension XG : 380-420V 3~ 50Hz / 460V 3~ 60 Hz
-------------------	------------------------------------------------------

Les performances sont données dans les conditions CECOMAF :	Gaz aspirés :	32.0 °C
Condition Dew	Sous refroidissement :	0.0 K
The performance data are in CECOMAF conditions :	Return gas :	32.0 °C
Dew Condition	Subcooling :	0.0 K

50 Hz R513A											
											N°User-358
4 T condensation	5 T évaporation	(°C)	-25	-20	-15	-10	-5	0	5	10	15
30	1 P frigorifique	(Watt)	1250	1767	2375	3088	3917	4876	5976	7230	8650
	2 P absorbée	(W)	647	749	836	914	985	1055	1128	1208	1299
	3 I absorbée	(A)	1.26	1.39	1.49	1.57	1.63	1.67	1.71	1.74	1.76
40	1 P frigorifique	(Watt)		1352	1885	2505	3226	4060	5020	6118	7367
	2 P absorbée	(W)		740	862	972	1075	1176	1277	1385	1502
	3 I absorbée	(A)		1.39	1.58	1.76	1.90	2.03	2.15	2.26	2.36
50	1 P frigorifique	(Watt)			1464	1996	2612	3325	4148	5094	6175
	2 P absorbée	(W)			866	1011	1148	1279	1411	1548	1693
	3 I absorbée	(A)			1.56	1.83	2.07	2.29	2.49	2.68	2.86
60	1 P frigorifique	(Watt)				1569	2084	2680	3370	4167	5084
	2 P absorbée	(W)				1052	1222	1387	1551	1718	1891
	3 I absorbée	(A)				1.79	2.13	2.44	2.72	3.00	3.26

60 Hz R513A											
											N°User-358
4 T condensation	5 T évaporation	(°C)	-25	-20	-15	-10	-5	0	5	10	15
30	1 P frigorifique	(Watt)	1483	2140	2883	3726	4682	5768	6995	8380	9935
	2 P absorbée	(W)	794	905	1001	1088	1172	1259	1355	1465	1594
	3 I absorbée	(A)	1.20	1.37	1.53	1.67	1.81	1.95	2.10	2.25	2.42
40	1 P frigorifique	(Watt)		1599	2284	3057	3931	4922	6043	7310	8736
	2 P absorbée	(W)		911	1049	1174	1291	1406	1525	1654	1798
	3 I absorbée	(A)		1.33	1.54	1.74	1.93	2.11	2.29	2.48	2.67
50	1 P frigorifique	(Watt)			1716	2400	3174	4053	5050	6181	7461
	2 P absorbée	(W)			1050	1224	1385	1541	1695	1855	2025
	3 I absorbée	(A)			1.54	1.80	2.04	2.26	2.49	2.71	2.94
60	1 P frigorifique	(Watt)				1812	2468	3215	4070	5048	6164
	2 P absorbée	(W)				1228	1446	1653	1855	2058	2267
	3 I absorbée	(A)				1.84	2.13	2.42	2.69	2.95	3.22

1 = cooling capacity 2 = power input 3 = current 4 = condensing temperature 5 = evaporating temperature

Nota : Tecumseh se réserve le droit de modifier les informations contenues dans ce document sans préavis.

Note : Tecumseh reserves the right to change information contained in this document without notification.

© 2025 Tecumseh Products Company
All rights reserved